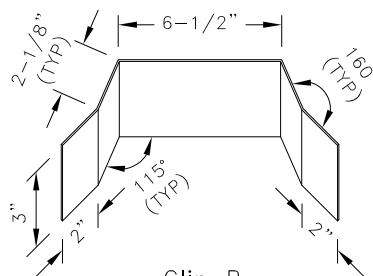


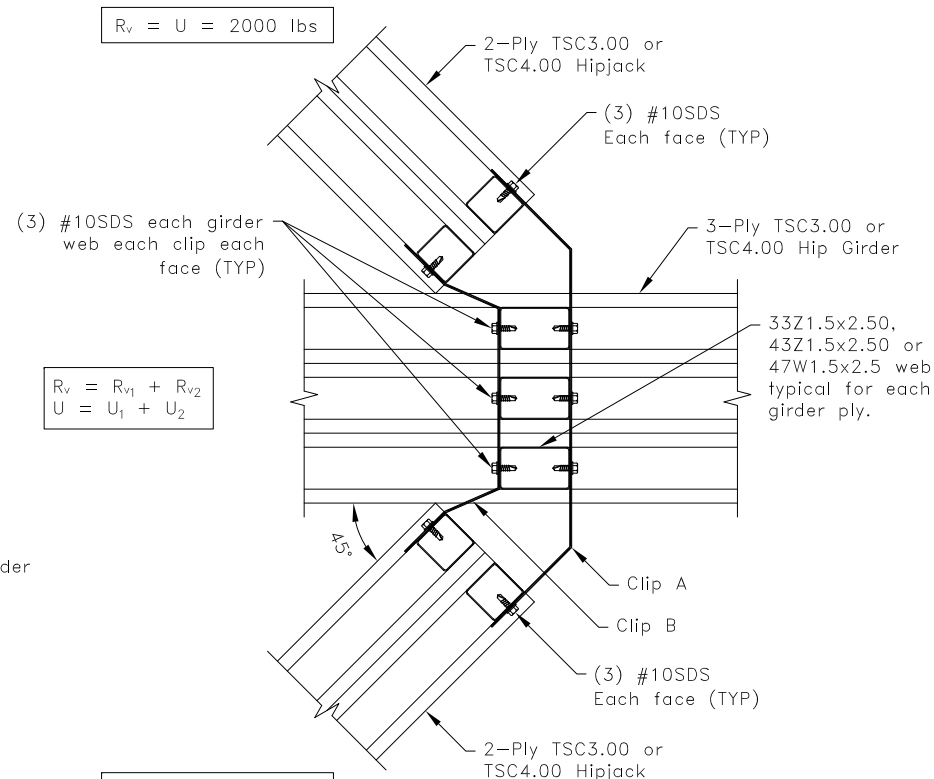
Clip A

14g ASTM A653 SS Grade 33 G60  
Bare Metal Thickness:  $t = 0.0677$ "



Clip B

14g ASTM A653 SS Grade 33 G60  
Bare Metal Thickness:  $t = 0.0677$ "



Plan View

#### General Notes:

1. SDS = self-drilling tapping screw.
2. All edge and end distances are  $9/32$ ", spacing is  $9/16$ " minimum.
3. The top and bottom chords of all truss shall be properly connected to structural sheathing or purlins, designed by others.
4. Truss must be analyzed with concentrated loads directly in line with correctly placed girder vertical webs.
5. For clips connecting to a Z-Web vertical refer to TS068 for connection area.
6.  $R_v$  refers to vertical reaction,  $U$  refers to uplift.
7. Cold-Formed Steel Calculations are per the 2010 supplement to the AISI 2007 "North American Specifications for the Design of Cold-Formed Steel Structural Members" (S100-07/S2-10).

**TrusSteel®**

www.TrusSteel.com

Florida: 1950 Marley Drive / Haines City, FL 33844 / (800) 755-6001  
Missouri: 13389 Lakefront Drive / Earth City, MO 63045 / (800) 326-4102

## 45° 3-Ply Hip Girder Truss-To-Truss Connection

ITW Building Components Group, Inc. shall not be responsible for any performance failure in a connection due to a deviation from this detail. Any variation from this detail shall be approved in advance by ITW Building Components Group, Inc.

#### Custom Detail:

CD120821

#### Date:

08/28/12

#### Custom Detail Category:

Truss-To-Truss Connection